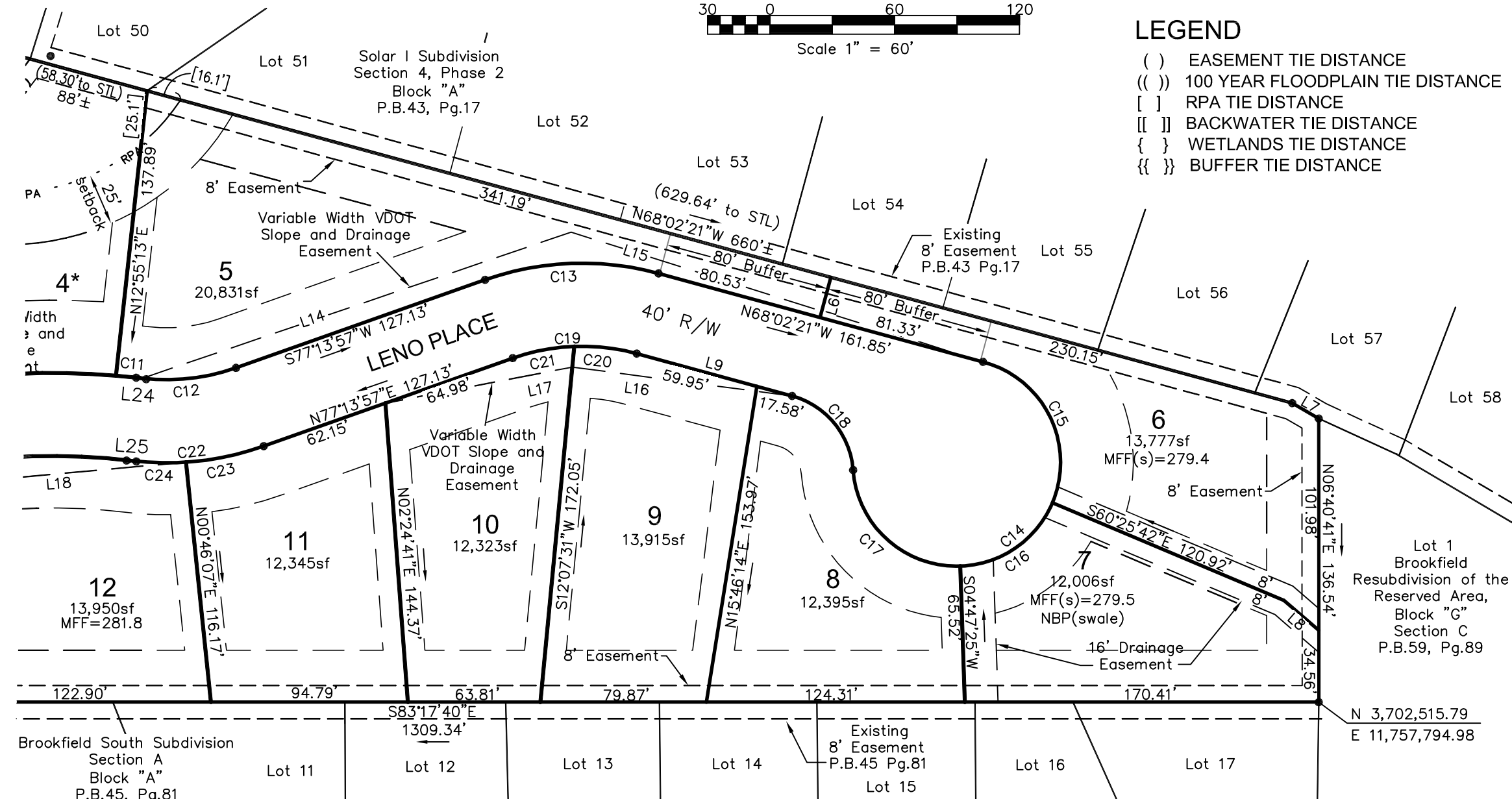
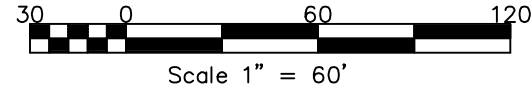


Curve Table						
Curve	Length	Radius	Tangent	ChdB	Chd	Delta
C1	163.75'	1550.40'	81.95'	N25°26'24"E	163.67'	6°03'05"
C2	46.12'	25.00'	33.00'	N30°26'24"W	39.86'	105°42'31"
C3	39.27'	25.00'	25.00'	S51°42'20"W	35.36'	90°00'00"
C4	68.14'	420.00'	34.14'	N11°21'11"E	68.06'	9°17'42"
C5	61.65'	380.00'	30.89'	N11°21'11"E	61.58'	9°17'42"
C6	39.27'	25.00'	25.00'	N38°17'40"W	35.36'	90°00'00"
C7	45.89'	100.00'	23.36'	S83°33'35"W	45.49'	26°17'30"
C8	212.2'	370.00'	109.11'	N86°50'37"E	209.30'	32°51'31"
C9	40.70'	370.00'	20.37'	N73°33'54"E	40.68'	6°18'08"
C10	159.93'	370.00'	81.23'	N89°05'56"E	158.69'	24°45'56"
C11	11.57'	370.00'	5.78'	S77°37'20"E	11.57'	1°47'30"
C12	45.77'	100.00'	23.29'	N89°39'20"W	45.37'	26°13'27"
C13	84.86'	140.00'	43.78'	S85°24'12"E	83.56'	34°43'42"
C14	219.15'	50.00'	69.93'	S56°55'22"W	81.35'	251°07'47"
C15	85.71'	50.00'	57.74'	S19°32'06"E	75.59'	98°12'51"
C16	56.91'	50.00'	31.99'	S62°10'52"W	53.89'	65°13'05"
C17	76.53'	50.00'	48.03'	N41°21'40"W	69.28'	87°41'51"
C18	49.24'	40.00'	28.28'	S32°46'33"E	46.19'	70°31'37"
C19	60.61'	100.00'	31.27'	S85°24'12"E	59.69'	34°43'42"
C20	30.36'	100.00'	15.30'	S76°44'11"E	30.24'	17°23'39"
C21	30.25'	100.00'	15.24'	N85°53'58"E	30.14'	17°20'03"
C22	64.08'	140.00'	32.61'	N89°39'20"W	63.52'	26°13'27"
C23	38.31'	140.00'	19.27'	S85°04'17"W	38.19'	15°40'41"
C24	25.77'	140.00'	12.92'	N81°48'59"W	25.73'	10°32'46"
C25	190.31'	330.00'	97.88'	N86°56'07"E	187.69'	33°02'34"
C26	90.21'	330.00'	45.39'	S84°22'29"E	89.93'	15°39'46"
C27	100.10'	330.00'	50.44'	N79°06'14"E	99.72'	17°22'48"
C28	64.24'	140.00'	32.70'	S83°33'35"W	63.68'	26°17'30"
C29	16.37'	140.00'	8.20'	N79°56'39"W	16.36'	6°42'02"
C30	38.35'	25.00'	24.10'	N59°33'17"E	34.70'	87°53'50"

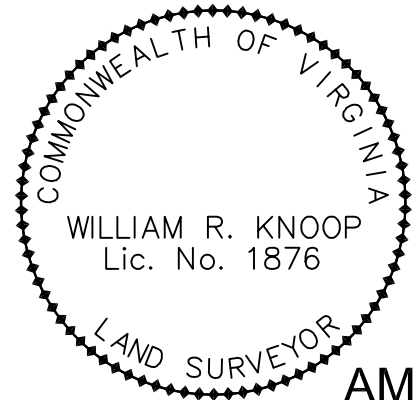
Easement Line Table		
Line	Length	Bearing
L10	41.54	N58°29'14"W
L11	191.04	S89°43'16"W
L12	82.08	S67°14'41"W
L13	25.82	S04°43'49"E
L14	218.01	N77°53'10"E
L15	207.85	S65°48'55"E
L16	106.70	S75°48'35"E
L17	91.58	N85°46'49"E
L18	169.27	S88°29'45"E
L19	51.14	N44°52'54"E
L20	60.31	N00°55'02"E
L21	58.01	N00°55'02"E
L22	62.55	N89°27'46"W

Line Table		
Line	Length	Bearing
L1	46.89	S06°42'20"W
L2	21.06	S16°00'02"W
L3	21.06	S16°00'02"W
L4	46.89	S06°42'20"W
L5	32.93	N13°17'02"W
L6	20.00	S21°57'39"W
L7	14.73	N53°01'52"W
L8	22.13	N42°26'55"W
L9	77.53	S68°02'21"E
L23	18.00	N73°59'58"W
L24	1.51	N76°43'39"W
L25	1.51	S76°43'39"E

LEGEND
 () EASEMENT TIE DISTANCE
 () 100 YEAR FLOODPLAIN TIE DISTANCE
 [] RPA TIE DISTANCE
 [] BACKWATER TIE DISTANCE
 { } WETLANDS TIE DISTANCE
 { } BUFFER TIE DISTANCE



BDA
 BARTHOL DESIGN ASSOCIATES
 civil engineering & land surveying
 550 Southlake Boulevard, Richmond Virginia 23236
 Phone (804) 379-1640 * Fax (804) 379-1752



AMENDED PLAT OF BOXWOOD
 CLOVER HILL MAGISTERIAL DISTRICT
 COUNTY OF CHESTERFIELD, VIRGINIA
 Subdivision ID# 000-0573-71
 Date: 7-16-2008 Job No.: 04-004-01 Scale: 1"=60'
 Sheet 2 of 2

APPROVED BY CHESTERFIELD COUNTY
 DATE _____ DIRECTOR OF PLANNING _____